



Newsletter

Friday 1st May 2026

Manurewa East School

10 Scotts Road, Manurewa, Auckland T: (09) 266 9487 Term 2 2026 Newsletter No 5

Kia Ora, Kia Orana, Malo e lelei, Talofa lāva, Fakaalofa lahi atu, Namaste, Bonjour, Hola, Nĭha o, Shalom, Merhaba, As-Salam-u-Alaikum

Kia ora whānau,

Welcome to another busy and exciting term. We hope you all had a restful break and are ready for what's ahead. It has been great to see our tamariki return settled motivated and ready to learn.

We are looking forward to getting started with our gymnastics fundamentals programme in a few weeks. This will give our tamariki the opportunity to build confidence coordination strength and resilience while having fun and trying new challenges.

Attendance continues to be a key focus for our kura.

Regular attendance is important for maintaining learning progress building positive routines and staying connected with their class. We appreciate your ongoing support in ensuring your tamariki are at school each day and arriving on time. Please continue to communicate with our teachers so we can work together to support your child's learning and wellbeing.

Our inquiry focus this term is "Weather Patterns and Natural Disasters, teachers are excited to engage students in this rich and meaningful topic through hands-on learning experiences and also lead to an Art piece.

Lastly we would also like to extend a heartfelt thank you to all the whānau who supported our recent Market Day in Term 1 2026. Whether you helped organise donated kai or came along to support your contribution made a real difference. Together we raised an incredible \$7,550.50 which will go towards our school van.

Thank you for your continued support we look forward to working alongside you throughout the term.

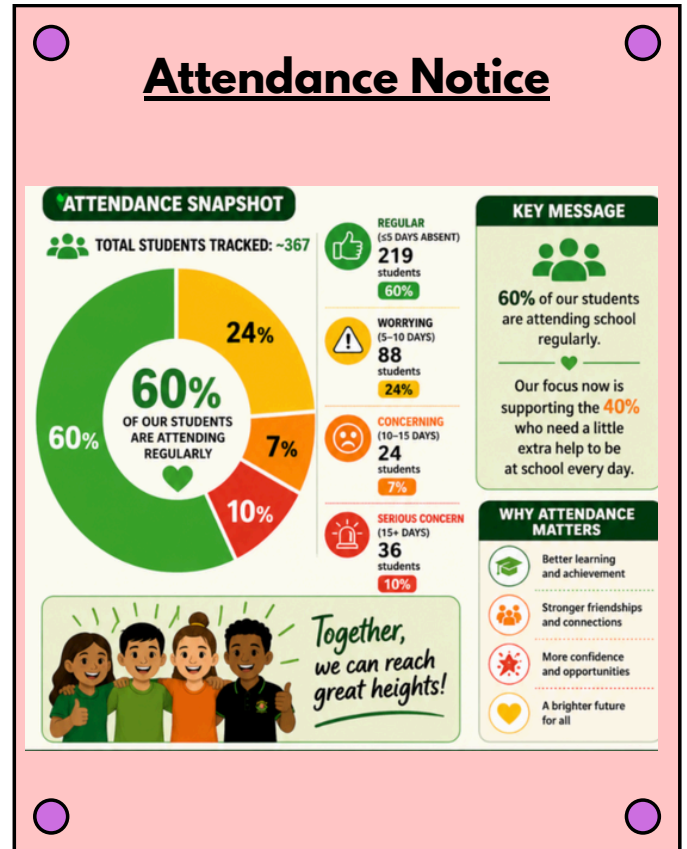
*Ngā mihi mahana
Mary Takatainga - Tumuaki*

Key dates:

Term 2 - Fundamentals starts Wednesday 27 May 2026
MPSSA Boys Football - Wednesday 6 May 2026
Samoan Language Week - May 31 to June 6 2026



*Kaitiaki is our school
value this term.*



Manurewa East School
Whiti te Rāi Rise and Shine!

Visit our website for regular updates

www.manurewaeast.school.nz

"Think me and be me" Puppet Show"



We are confident, resilient and will reach great heights

Our tamariki recently enjoyed attending "The Amazing Think and be Me Muppet Show." This engaging and interactive performance was designed to help students recognise, understand, and express a range of emotions, including feelings of worry and sadness that may arise in the school environment. The show also provided practical strategies and tools to support students in managing and navigating their emotions in positive and healthy ways. This experience was specifically targeted towards our Year 1 and Year 2 students, who thoroughly enjoyed the performance and participated with great enthusiasm. We appreciate opportunities such as this that support the wellbeing and emotional development of our learners.



"Think and Be Me" session with tamariki from A1/2, E1/2 & E3/4. The tamariki also enjoyed the session of Ha ki roto and ha ki waho



SENSORY GARDEN

Our sensory garden is flourishing even within a short school term with tamariki actively engaged in their morning routine of watering and caring for the plants. They are developing a sense of responsibility independence and connection to nature. The garden is also supporting sensory exploration as they notice textures scents and changes in plant growth while creating a calm meaningful start to their day.