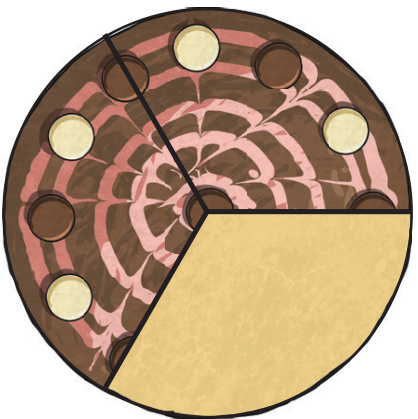


Level 2 Maths Mat

How much of the cake has got chocolate on it?

a



Order these numbers from smallest to largest:

b

887 778 980 1092 1929 210

Estimate then measure the length of the line.

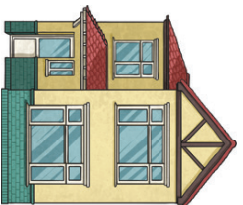
e

Estimate: _____

Actual: _____

Jackson walks to his rugby practice 3 times a week and walks home again. It is 1.5 kilometres away from his house. How far will he walk total in a week?

d



Will bought a book for \$4.50 and a pack of chips for \$1.80. How much did this cost him? _____

f

If he paid with a \$10 note, how much change would he get? _____

932
How many hundreds in this number? _____

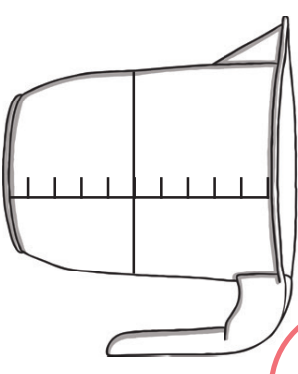
c

How many tens in all of this number? _____

How many ones in all of this number? _____

What fraction of the jug contains sugar?

g



What direction is this arrow pointing?

h

