

Summer 8

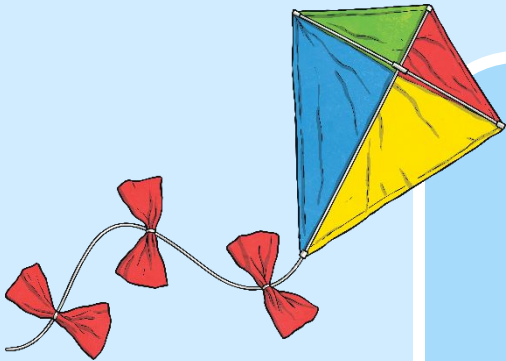


Fluency, Reasoning and Problem-Solving

Morning Starter



twinkl



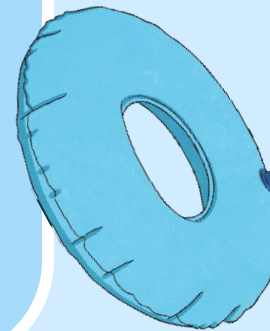
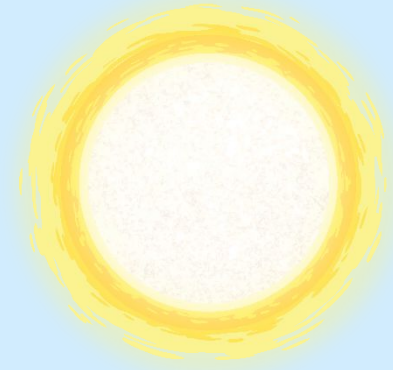
Monday

Tuesday

Wednesday

Thursday

Friday



Place Value

Write 1426 in words.



Reveal answer

+ and -

$$572 + 80 =$$



Reveal answer

$$661 - 400 =$$



Reveal answer

× and ÷

$$55 \times 10 =$$



Reveal answer

$$450 \div 50 =$$



Reveal answer

Problem Solving

Alana's bus leaves the hotel at 15:45. The journey to the beach takes 40 minutes.

What time does she arrive?

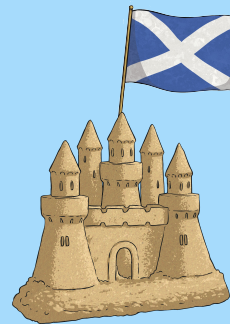
16:25

Reveal answer



Reasoning

The white lines on this flag are perpendicular.



Is Harry correct?

Explain why.



Place Value

What is the value of the underlined digit?

300 or 3 hundreds



Reveal answer

Problem Solving

Alana spends 6 hours at the beach. She swims for $\frac{1}{4}$ of that time. How many minutes does she swim for?

90 minutes



Reveal answer

+ and -

$$723 + 200 =$$



Reveal answer

$$314 - 60 =$$



Reveal answer

× and ÷

Complete this written multiplication:

$$\begin{array}{r} 62 \\ \times 4 \\ \hline 248 \end{array}$$

Reveal answer

$$400 \div 10 =$$



Reveal answer

Reasoning

This clock says twenty-five to six.



Is Alana correct?

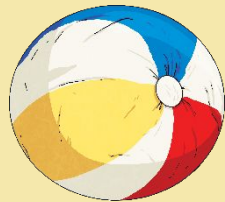
Explain why.



Place Value

Use the correct symbol to compare these numbers:

$$165 - 10 \quad \text{95} + 60$$



Reveal answer

+ and -

$$407 + 85 =$$



Reveal answer

Complete this column subtraction:

$$\begin{array}{r} 573 \\ - 242 \\ \hline 331 \end{array}$$

Reveal answer

× and ÷

$$80 \times 8 =$$



Reveal answer

$$500 \div 5 =$$

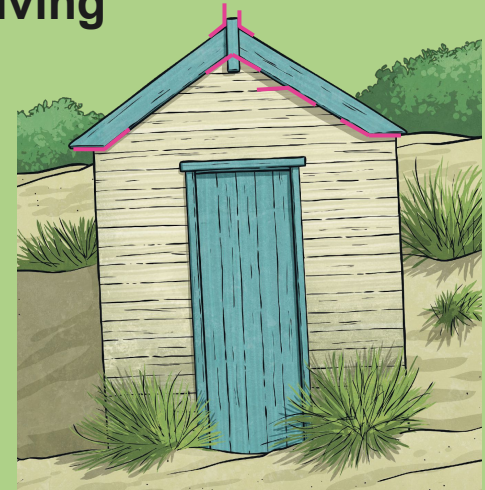


Reveal answer

Summer 5
Wednesday

Problem Solving

Which angles are bigger than a right angle?



Reveal answer

Reasoning

A quadrilateral cannot have parallel sides.



Is Harry correct?
Explain why.

Place Value

Reveal answer

Which numbers have a difference of 10?

278

287

268

267

268

and

278

+ and -

$$411 + 96 =$$



Reveal answer

$$465 - 57 =$$



Reveal answer

× and ÷

$$60 \times 4 =$$



Reveal answer

$$330 \div 3 =$$



Reveal answer

11

Problem Solving

Which bus should Harry get from the train station if he needs to be at the airport by ten to eleven?

Hotel	08:16	09:25	10:10
Train station	08:59	10:08	10:53
Airport	09:20	10:29	11:14

Reveal answer

10:08

Reasoning

January has more days than December.

Is Alana correct?

Explain why.



Place Value

Reveal answer

What are the next three numbers in this sequence?



+ and -

Complete this column addition:

$$\begin{array}{r} 245 \\ + \text{strawberries} \\ \hline 477 \end{array}$$

Reveal answer

$$189 - 110 = \text{beach ball}$$

Reveal answer

× and ÷

$$110 \times 8 = \text{strawberries}$$

Reveal answer

$$400 \div 8 = \text{ice cream cone}$$

Reveal answer

Problem Solving

How many days are there in 50 weeks?

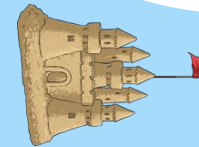


350

Reveal answer

Reasoning

The castle has been turned through two right angles anticlockwise.



Is Harry correct?

Explain why.



twinkl